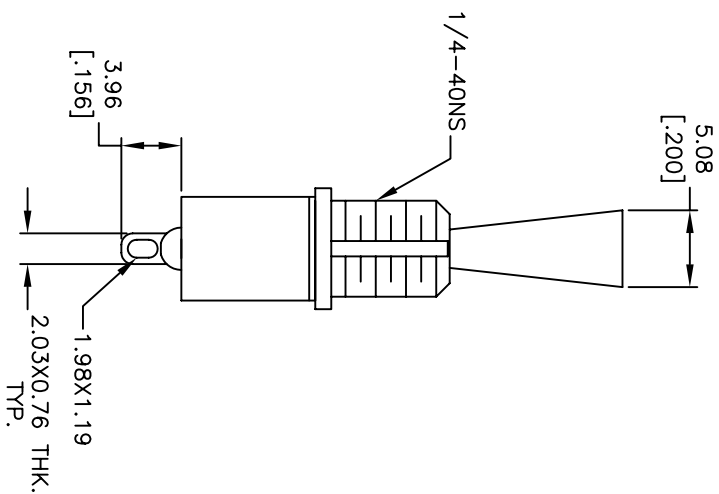
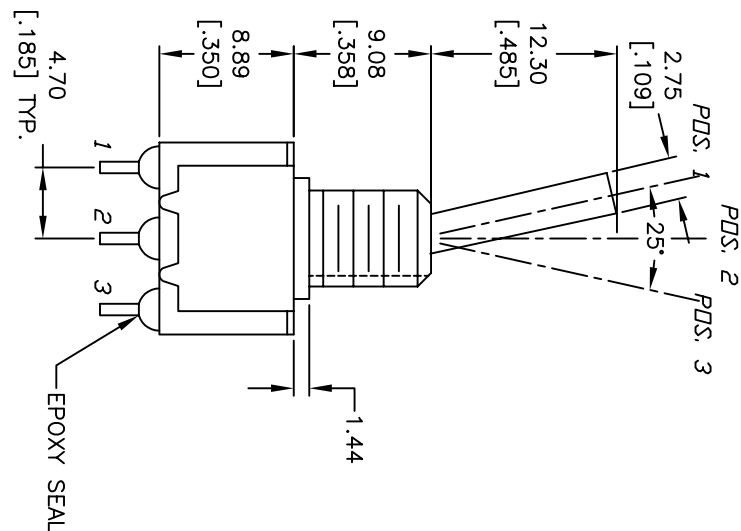
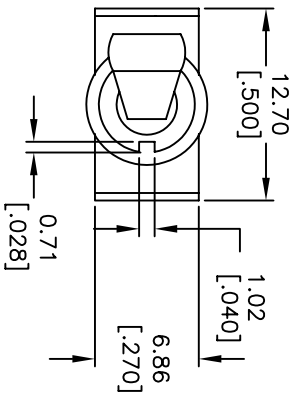


CIRCUIT: SPDT

CONTACT CONFIGURATION

SWITCH FUNCTION		
POS. 1	POS. 2	POS. 3
DN	OFF	DN
2-3	OPEN	2-1



- NOTES:
1. ALL DIMENSIONS IN MM [INCH]
 2. GENERAL TOLERANCE: X.X=±0.4 X.XX=±0.25
 3. TERM. NOS. FOR REFERENCE ONLY.
 4. PLATING MATERIAL: SILVER
 5. RATING: 5A @120VAC OR 28VDC
2A @250VAC;
 6. ELECTRIC LIFE: 40,000 MAKE-AND-BREAK CYCLES AT FULL LOAD.
 7. INSULATION RESISTANCE: 1,000 MEGA-OHM MIN.
 8. DIELECTRIC STRENGTH: 1,000V RMS @SEA LEVEL.
 9. OPERATING TEMP.: -30°C TO 85°C
 10. ▲ DENOTES CRITICAL PARAMETER
 11. 2002/95/EC (ROHS) COMPLIANT

REV.	ECN No.	DESCRIPTION	DATE	CHKD
D	16799	UPDATED NOTES	12/27/06	TN
C	15150	CHANGED DIM & UPDATED NOTES	8/5/05	PV
B	10599	STANDARDS, ACTUATOR HEIGHT	4/19/04	AR
A	10599	RELEASED FOR PRODUCTION		

TITLE		SCALE	DATE	DR	DWG	REV
100SP3T6B1M1QE		2:1	12/27/06	TN	T113031	D



THE INFORMATION CONTAINED IN THIS DOCUMENT IS PROPRIETARY TO E-SWITCH AND IS NOT TO BE COPIED OR TRANSFERRED